

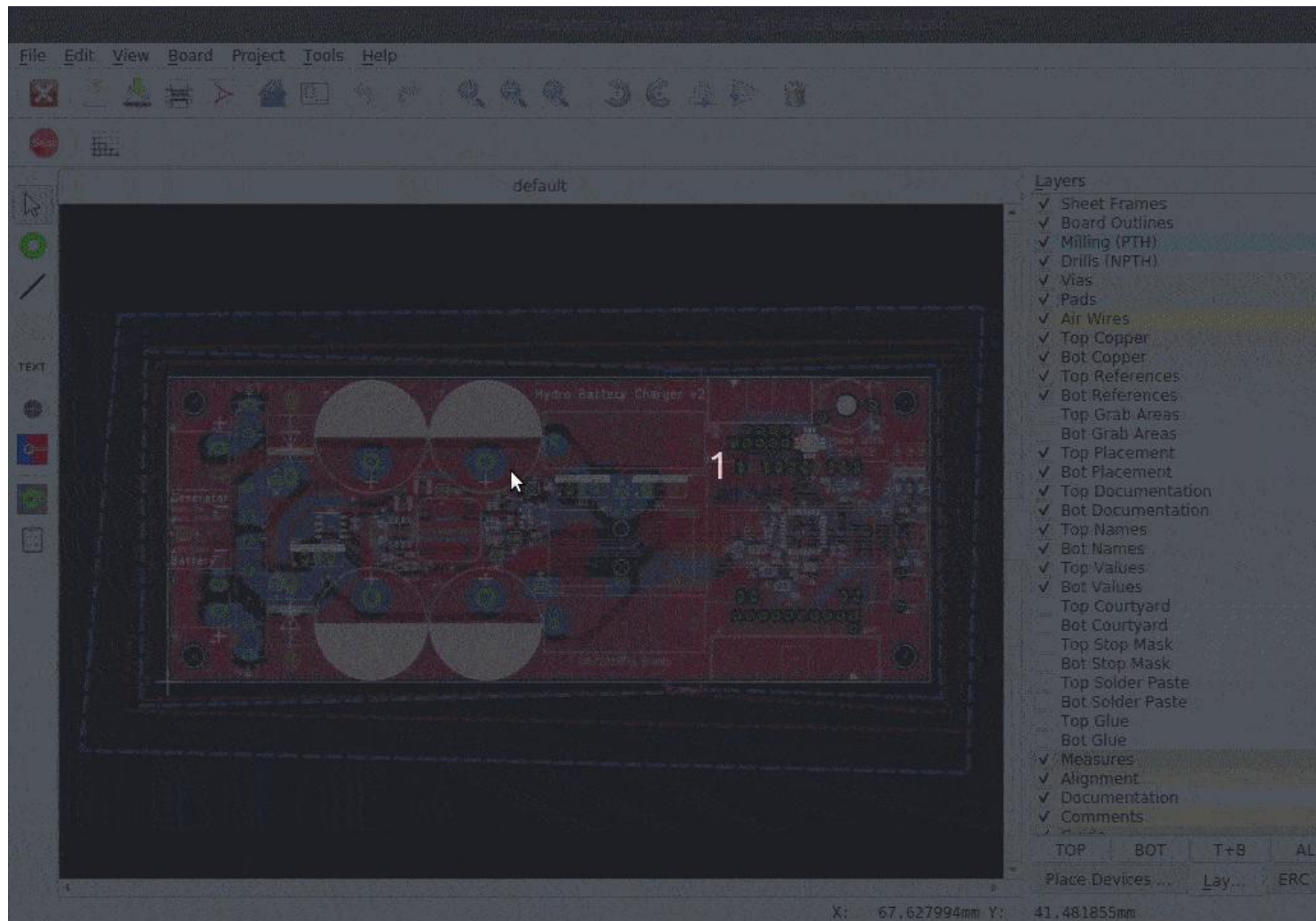
K dispozícii je nová verzia LibrePCB - 0.1.3

Autor opäť o kúsok vylepšil tento program a pomaly sa stáva použiteľným. Hlavne doplnenie kontroly návrhových pravidiel (aj keď obmedzené), doplnenie pdf exportu a opravy v gerber exporte posunuli tento program.

Výraznejšie opravy a nové (významné) funkcie sú naplánované až do verzie 0.2. S programom sa však dá robiť už aj teraz, aj keď niektoré drobnosti chýbajú, alebo sú trochu ťažkopádne. V každom prípade odporúčam tento program na skúšku či prípadné reportovanie chýb, alebo žiadanie o doplnenie nových funkcií.

[Download tu.](#)

Pohľad na DRC:



## Highlights

- Design Rule Check for Boards (#581) - Finally the board editor got a design rule check! It checks a PCB for common mistakes like missing connections, too small clearances (or shorts), or too thin copper elements. A new dock widget shows the reported messages and clicking on a message displays the issue in the board view.
- BOM Export (#499) - Now it's also possible to export the bill of materials (BOM) of a LibrePCB project to a CSV file. In addition to some predefined columns, you can add arbitrary component attributes as additional columns to the CSV.
- Print Boards (#567) - Boards can now be printed and exported to PDF, with respecting the currently visible layers.

## Changelog

### Library Editor:

- Add mirror functionality to symbol/package editors (#569)
- Show footprint pad names in package editor (#570)
- Add more widgets to package text drawing command toolbar (#521)
- Adjust default values of symbol and package elements (#523)
- Remove underscore from predefined text placeholders (#555)
- Fix possibly missing message box when closing tab (#563)

### Schematic Editor:

- Add BOM export dialog (#499)
- Allow changing pre-selected device of components (#565)
- Provide more options when renaming net segments (#532)
- Initialize .lppz export filename with default value (#524)
- Fix missing device when adding component multiple times (#561)

### Board Editor:

- Add design rule check (#581)
- Add PDF export and print support (#567)
- Add tool to measure wire length (#564)
- Allow to hide copper planes (#531)
- Allow rotating while moving items (#533)
- Add device context menu item "snap to grid" (#525)
- Fix missing plane cut-out for board outlines in footprints (#501)
- Fix invisible zero-width circles/polygons (#502)
- Fix wrong rotation of mirrored pads in plane cut-outs (#509)

### Gerber Export:

- Add support for non-square octagon pads (#507)
- Always use multi-quadrant mode for arcs (#504)
- Fix possibly wrong position of circles in footprints (#508)

## CLI:

- Add --strict option (#583)

## Miscellaneous:

- Implement pinch to zoom in all graphics views (#477)
- Add menu items to toggle visibility of dock widgets (#487)
- Support copying and moving rows in polygon editor dialogs (#489)
- Auto-select attribute unit when entering unit in value field (#491)
- Replace spinboxes/comboboxes with unit-aware edit widgets (#520)
- Provide .tar.gz archive with pre-built binaries for deployment on Linux (#571)
- Fix broken settings when closing windows with OpenGL enabled (#503)
- Fix possible crash when re-opening symlinked projects (#573)
- Fix possibly wrong grab area of various graphics items (#582)

## New languages:

- Slovak (98% translated)
- French (4% translated)